

Mother Tongue Language

Primary 4

Together

WE make a difference



Mission

To develop our Haig girls to be

- proficient in their MTL
- confident & effective communicators
- individuals whose values are rooted in their culture



P4 Focus

Deepened emphasis on:

- (i) oral,
- (ii) reading ,
- (iii) writing and
- (iv) comprehension skills to prepare students for more complex linguistic skills



Assessments

Weighted and non-weighted assessments will be conducted throughout the year and feedback on your child's learning will be given.

Level	Term 1	Term 2	Term 3	Term 4
P4	NWA	Mid Year Exam (30%)	WA (10%)	End of year Exam (60%)



Components & weightage for Standard MTL

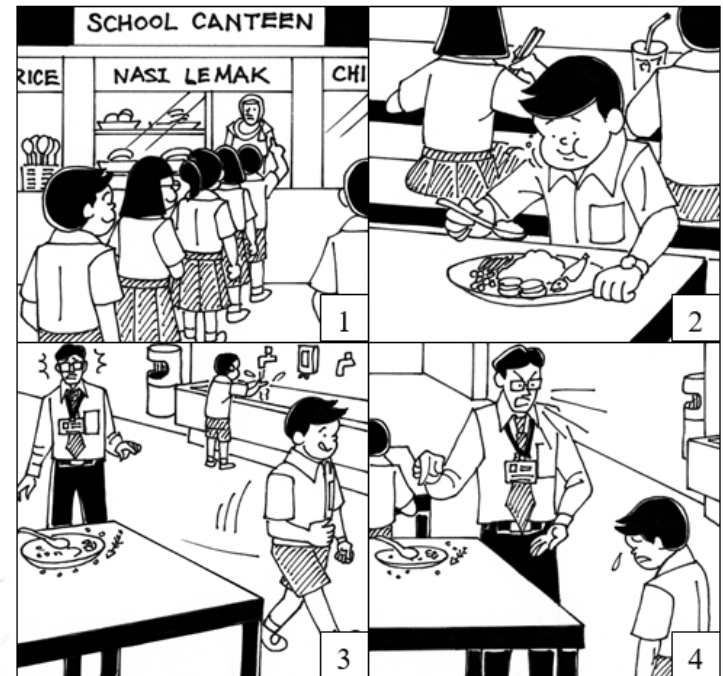
Paper 1	Composition	15 Marks	(15%)
Paper 2	Language Use & Comprehension	45 Marks	(45%)
	Oral	30 Marks	(30%)
	Listening Comprehension	10 Marks	(10%)
	Total	100 Marks	(100%)

Assessments items are very similar to Primary 3, except **composition writing**.

Instead of a paragraph, students are expected to **write a story based on the 4 pictures provided**. Students will need to present the story in a few paragraphs by the end of Primary 4.

Note:

- 8 helping words will be provided
- Approved E-dictionaries are allowed for use during Paper 1 exam.



Subject-based banding

- Will be conducted at the end of Primary 4
- parents will be give the option to choose **one** of the MT Language streams for their child:
 - Mother Tongue (CL, ML, TL)
 - Foundation MT (FCL, FML, FTL)
 - HMT (HCL, HML, HTL)



Most students will take Standard Mother Tongue language.

Higher Mother Tongue is recommended for students who:

- Have strong proficiency in the language
- Have strong interest in the language and its culture,
- Read widely in the MT language
- Have strong foundation in EL, Math, Science & are able to manage a heavier overall load.



Advantages of taking HCL

- Receive posting advantage (*for SAP Schools only*)
- Develop child's interest & proficiency in MTL

Note:

HMT grade does not contribute to the overall PSLE score.

It is not compulsory to do HMTL at PSLE in order to join a SAP school.



Will HCL students still receive bonus points for entry to SAP school?

POSTING ADVANTAGE

- Higher Chinese Language (HCL) students will continue to receive a posting advantage for admission to SAP schools
- For example, if 2 students have a PSLE Score of 8, the student who has a Distinction in HCL will be allocated a place in a SAP school ahead of a student who has a Merit in HCL.
- This posting advantage for admission to SAP schools applies before the tie-breakers for S1 Posting.







Source:

<https://www.moe.gov.sg/microsites/psle/FAQs/special-cases.html>



Haig Girls' School

WHO WILL GET IN FIRST?

1st		7	NO HCL
2nd		8	DISTINCTION
3rd		8	MERIT
4th		8	PASS
5th		8	NO HCL
6th		9	DISTINCTION

List of SAP Secondary Schools

1. Anglican High School
2. Catholic High School
3. CHIJ St. Nicholas Girls' School
4. Chung Cheng High School (Main)
5. Dunman High School
6. Hwa Chong Institution (High School Section)
7. Maris Stella High School
8. Nan Chiau High School
9. Nan Hua High School
10. Nanyang Girls' High School
11. River Valley High School





Students should **NOT** consider taking up HMT if currently, she finds it challenging to manage the 4 core subjects because... ..

- She will be more stressful with the extra workload from HMT.
- She will have difficulty managing her time.
- She may lose her confidence and interest in the language if she cannot perform well.



Foundation Mother Tongue is recommended for students who find it challenging in learning the language.

Advantages in taking up FMT

- Focus on Listening and Oral skills, less on writing skills.
- Students can build up their confidence in the language



At the end of Primary 5,

The school will recommend to parents the MT Language that their children should be taking in Primary 6.

Recommendation for taking HMT at Primary 6 will be based on the overall results of the student in Primary 5. Students need to score at least **70% for EMS MT, and get a pass in HMT**



Ways to support your child in Mother Tongue Learning



1. Oracy

- Encourage child to express their views in MTL during daily conversations with you, if you speak the language. This will motivate her to express herself in the language frequently and gain confidence.

2. Listening

- Listen to online texts, audio books, songs, radio broadcast, watching T.V. programme etc , as this will enhance her listening skill & get her to be more interest in the language.



Ways to support your child in Mother Tongue Learning



3. Writing

- Encourage child to identify ideas, gather good phrases and analyse the structure when reading.
- Apply skills & words she learnt in her writing practices.

4. Language Use

- Revision is important before assessments. Going through the texts, Wordlist or Bilingual lists to check understanding.

Regular practice will help in understanding and enhance memory.



Encourage Self-directed Learning

SLS Portal (Student Learning Space)

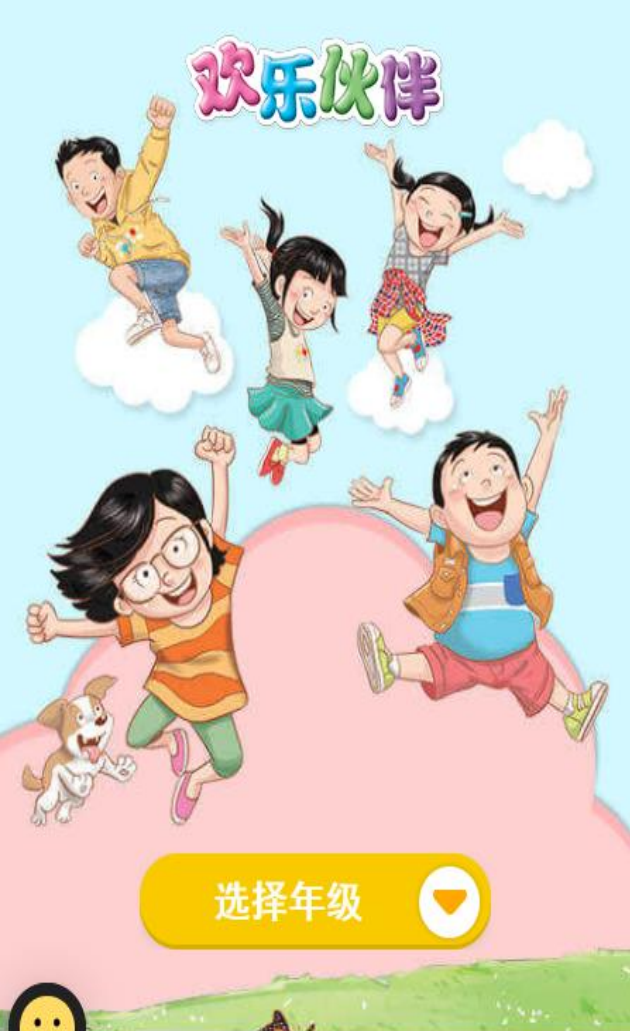
<https://vle.learning.moe.edu.sg/gate-keeping.html>

BI-WEEKLY MAGAZINES 《新列车》

www.ezhishi.net (Chinese only)



Mother Tongue Syllabus



E-tutor Online Chinese Learning Portal

Ezhishi.net



eAssignment
电子作业



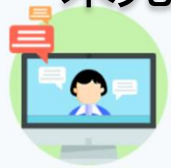
Teachers to assign appropriate worksheets for students according to their learning needs
老师会根据各班的需要自行发布电子作业给学生，学生登入时会提醒他有未完成的电子作业。



eChinese Magazine
易·华文



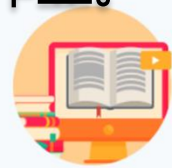
eExercise
网上练习



eOral
口试互动



Zhishi.Funland
知识·悦读



eReading
分级阅读



eClassic
经典阅读



Online Revision
定期的复习:

- 根据课文
- 不同类型的习题

Oral Practices
口试练习:
视频会话

E-reading materials
阅读故事



E-tutor Online Chinese Learning Portal Ezhishi.net



Topical assessment
according to students'
learning progress
练习题，复习所学

Revision of
vocabulary
复习字词



ML Resources

SLS/IMTL Portal

- for teaching and learning of ML
- online tasks / homework

Malay Language Centre of Singapore (MLCS)

Educational Apps

Link to the apps -

<https://academyofsingaporeteachers.moe.edu.sg/mlcs/resources>

1) Legenda Singapura App

Stories on Singapore legends (e-stories)
learning of vocab, comprehension, idioms
to encourage reading and develop reading skill



ML Resources



2) Cerita-cerita Rakyat Nusantara

- stories on Malay Folktales (e-stories)
- to encourage reading and develop reading skill

3) Bitara Kata

- learning of ML through exploration of various themes

4) Pintar Kata

- to build vocabulary through fun learning/games



Approved Dictionary Lists

<https://www.seab.gov.sg/home/examinations/approved-dictionaries>



Thank You

Chinese:

Chua_boon_ling@moe.edu.sg

ng_peng_woon_rachel@moe.edu.sg

Malay: norah_nordin@moe.edu.sg

Tamil: subramaniam_prema@moe.edu.sg

